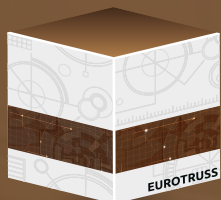


ORN ELECTRIC.



EUROTRUSS
S T A G E D E C K S



BMW i8

BMW



Eurotruss & Total Structures are proud to present the latest Deck Series.

This model combines strength and durability. With its weight of only 3,2 lbs/sqft (16kg/m²) it is one of the lightest and strongest decks in the industry. Guaranteed load capacity of 150 lbs/sqft on a 8x4ft Deck and 750 kg/m² on a 2x1m Deck.

A special long centered steel profile ensures full stability and a 45% less deflection.

The Pro Deck is a base for stages, fashion show catwalks, tribunes and conference podiums. All accessories (self-levelling inserts, barrier clamps, stairs clamps or assembly inserts which can be used to hang curtains or advertising banners) are fastened to the section: The platform top is made of waterproof plywood with an anti-slip layer which is standard available in black.

You can also choose for a basic plywood deck in multiple colors and even glossy white, black and transparent decks are available in all imperial and metric sizes.

The platforms can be supported by non-adjustable or telescopic legs which make it possible to smoothly and precisely adjust the platform height within 5 different height ranges. Thanks to their structure, the platforms can be installed both, outdoors in different terrains and indoors (inside the buildings, show halls, theatres etc.).



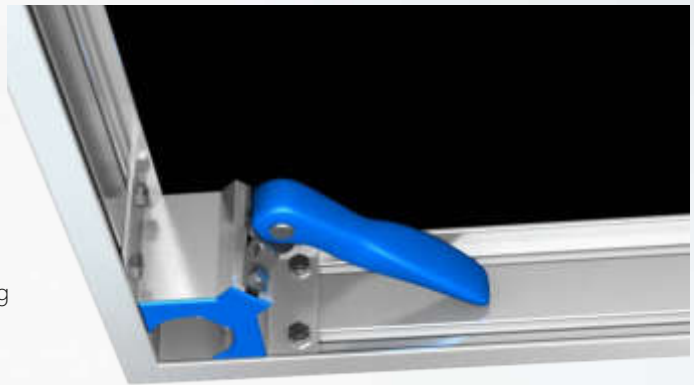
Upgraded stability design

A longitudinal beam and a special steel profile design ensures full stability and less deflection than other brands in the market. The deflection has been reduced with 45%.

A TÜV certificate and structural reports ensuring maximum safety confirm this high quality.

New Corner Leg Holder

The new aluminum corner makes a solid leg connection possible; with an easy flip of the new quick-lock lever system the leg connection stays fixated during build-up. You will find many leg holders at various brands made of 2 pieces and equipped with a knob. We redesigned and replaced this by a single solid corner cube with a quick-lock handle. Not only easier to use but also offering a better connection to secure the legs.

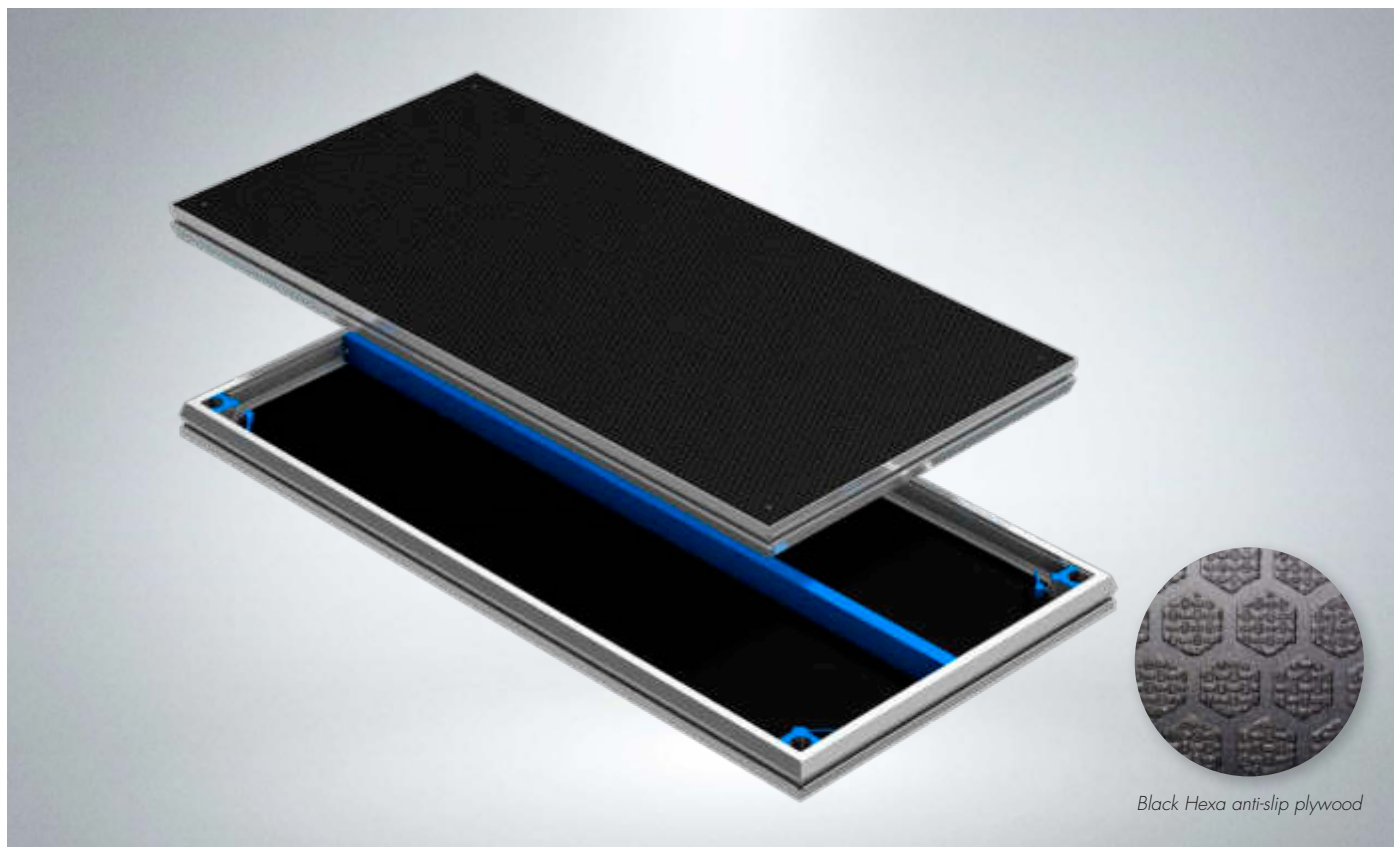


The decks are designed to be supported by fixed, light adjustable and / or telescopic legs which make it possible to raise the platform to the desired height.



Special profile

All accessories like self-leveling inserts, railing clamps, stairs, clamps or assembly inserts which can be used to hang curtains or advertising banners are fastened to the profile section.



Black Hexa anti-slip plywood

Pro Deck

Eurotruss & Total Structures are proud to present the latest Deck Series. This model combines strength and durability. With its weight of only 16kg/m² (3,2 lbs/sqft) it is one of the lightest and strongest decks in the industry. Guaranteed load capacity of 750 kg/m² on a 2x1m Deck and 150 lbs/sqft on a 8x4ft Deck.

A special long centered steel profile ensures full stability and a 45% less deflection. The Pro Deck is a base for stages, fashion show catwalks, tribunus and conference podiums. All accessories (self-levelling inserts, barrier clamps, stairs clamps or assembly inserts which can be used to hang curtains or advertising banners) are fastened to the section: The platform top is made of waterproof plywood with an anti-slip layer which is standard available in black.

You can also choose for a basic plywood deck in multiple colors and even glossy white, black and transparent decks are available in all imperial and metric sizes.

The platforms can be supported by non-adjustable or telescopic legs which make it possible to smoothly and precisely adjust the platform height within 5 different height ranges. Thanks to their structure, the platforms can be installed both, outdoors in different terrains and indoors (inside the buildings, show halls, theatres etc.).

Facts

- Lightweight, weighs only 16kg p/m² , / 3,2 lbs/sqft
- Loading vertical: 750 kg/m² , / 150 lbs/sqft (static approved)
- Loading according DIN 15921
- Equipped with Black Hexa anti-slip Plywood
- Applicable on Scaffolding
- TÜV approved and structural report available

Specifications Standard Size

	Metric	Imperial
Dimensions:	2x1 m.	8x4 ft.
Profile Height:	90 mm.	3,54 in.
Plywood:	12 mm. (Anti-slip)	0,47 in. (Anti-slip)
Weight:	32 kg. (200 x 100 cm.)	101 lbs (8x4ft.)
Material:	EN AW-6082 T6 and Plywood	



Pro Deck Metric

The popular Eurotruss Pro Deck in Metric sizing, 100% compatible with the existing Eurotruss Decks.

Pro Deck Imperial Size

Productcode	Size
<i>ED-T-750-2x1</i>	2 x 1 m.
<i>ED-T-750-1x1</i>	1 x 1 m.
<i>ED-T-750-2x0,5</i>	2 x 0,5 m.
<i>ED-T-750-1x0,5</i>	1 x 0,5 m.



Pro Deck Imperial

The popular Eurotruss Pro Deck in Imperial sizing, 100% compatible with the existing Eurotruss Decks.

Pro Deck Imperial Size

Productcode	Size
<i>ED-T-750-8x4</i>	8 ft x 4 ft.
<i>ED-T-750-4x4</i>	4 ft x 4 ft.
<i>ED-T-750-8x2</i>	8 ft x 2 ft.
<i>ED-T-750-4x2</i>	4 ft x 2 ft.

Basic Deck



Basic Deck

Eurotruss & Total Structures are proud to present the latest Deck Series. This model combines strength and durability. With its weight of only 16kg/m² (3,2 lbs/sqft) it is one of the lightest and strongest decks in the industry. Guaranteed load capacity of 750 kg/m² on a 2x1m Deck and 150 lbs/sqft on a 8x4ft Deck.

A special long centered steel profile ensures full stability and a 45% less deflection. The Pro Deck is a base for stages, fashion show catwalks, tribunes and conference podiums. All accessories (self-levelling inserts, barrier clamps, stairs clamps or assembly inserts which can be used to hang curtains or advertising banners) are fastened to the section: The platform top is made of waterproof plywood with an anti-slip layer which is standard available in black.

You can also choose for a basic plywood deck in multiple colors and even glossy white, black and transparent decks are available in all imperial and metric sizes.

The platforms can be supported by non-adjustable or telescopic legs which make it possible to smoothly and precisely adjust the platform height within 5 different height ranges. Thanks to their structure, the platforms can be installed both, outdoors in different terrains and indoors (inside the buildings, show halls, theatres etc.).

Facts

- Lightweight, weighs only 16kg p/m², / 3,2 lbs/sqft
- Loading vertical: 750 kg/m², / 150 lbs/sqft (static approved)
- Loading according DIN 15921
- Equipped with Black Hexa anti-slip Plywood
- Applicable on Scaffolding
- TÜV approved and structural report available

Specifications Basic Deck

	Metric	Imperial
Dimensions:	200 x 100 cm. (standard)	8x4 ft.
Profile Height:	90 mm.	3,54 in.
Plywood:	12 mm.	0,47 in.
Weight:	16kg/m ²	3,2 lbs/sqft
Material:	EN AW-6082 T6 and Plywood	

Basic Deck



Basic Deck Metric

The basic deck in Metric sizing.

Basic Deck Metric

Productcode	Size
<i>ED-B-750-2x1</i>	200 x 100 cm.
<i>ED-B-750-1x1</i>	100 x 100 cm.
<i>ED-B-750-2x05</i>	200 x 050 cm.
<i>ED-B-750-1x05</i>	100 x 050 cm.



Basic Deck Imperial

The E basic deck in Imperial sizing.

Basic Deck Imperial

Productcode	Size
<i>ED-B-750-8x4</i>	8 x 4 ft.
<i>ED-B-750-4x4</i>	4 x 4 ft.
<i>ED-B-750-8x2</i>	8 x 2 ft.
<i>ED-B-750-4x2</i>	4 x 2 ft.



Scaffolding integration

Eurotruss introduces the new Scaffolding series consisting from the Pro Deck and the Eurotruss Layher Beam (ED-LAYB). This combination enables a fully integration with mobile scaffolding systems!

Decks with recessed corners

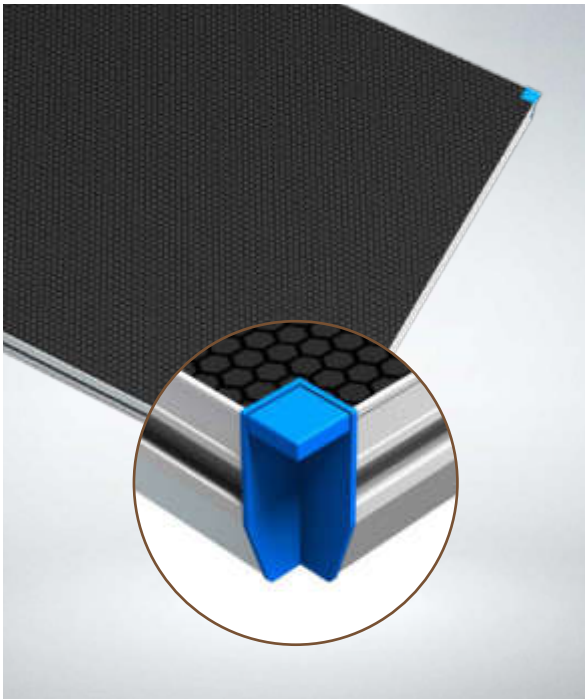
Eurotruss Pro deck with demountable recessed corners can be easily built on modular scaffolding system directly on the Eurotruss Event Beam without using any additional adapters.

Eurotruss Layher Beam

Eurotruss Event Beam is a specially designed beam for the Eurotruss Pro deck which enables fast and full integration with modular scaffolding systems!

Facts

- All decks are equipped to be used in combination with steel scaffolding system base. Metric dimenions are 200/207cm and imperial dimensions are 8ft/4ft)
- Pro Deck with recessed corners gives you the possibility to continue building the vertical support elements for hand railing, drum risers etc
- Gives you a solid and safe stage as we recommend using legs up to 3,5ft / 100cm, legs with diagonal braces up to 5ft / 150cm and steel scaffolding base for stage heights over 5ft / 150cm



Pro Deck Layher

Pro Deck Layher

Productcode	Size
ED-T-750-207x104	2072 x 1036 mm.
ED-T-750-104x104	1064 x 1036 mm.
ED-T-750-207x073,6	2072 x 736 mm.
ED-T-750-207x030	2072 x 300 mm.
ED-T-750-2x1R	200 x 100 cm. with recessed corners
ED-T-750-1x1R	100 x 100 cm. with recessed corners
ED-T-750-2x05R	200 x 50 cm. with recessed corners
ED-T-750-1x05R	100 x 50 cm. with recessed corners
ED-T-750-207x104R	2072 x 1036 mm. with recessed corners
ED-T-750-104x104R	1064 x 1036 mm. with recessed corners
ED-T-750-8x4R	8ft. x 4ft. with recessed corners
ED-T-750-4x4R	8ft. x 4ft. with recessed corners



Layher Beam

Layher Adapter

Productcode	For layher size
ED-LAYB-L200	200 cm.
ED-LAYB-L100	100 cm.
ED-LAYB-L207	2072 mm.
ED-LAYB-L103,5	103,5 cm.
ED-LAYB-L8FT	8 ft.
ED-LAYB-L4FT	4 ft.

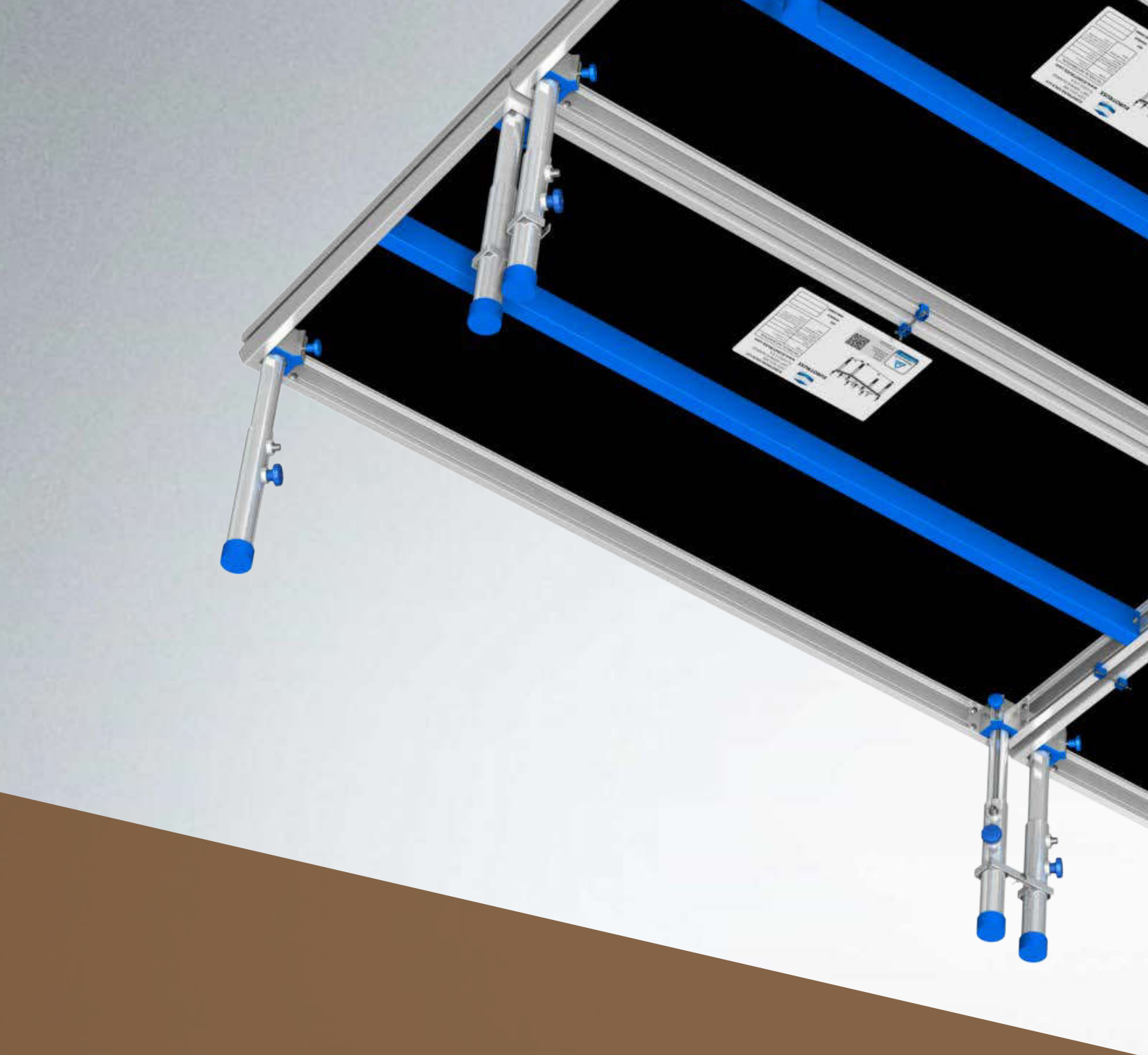


Platform Limiter

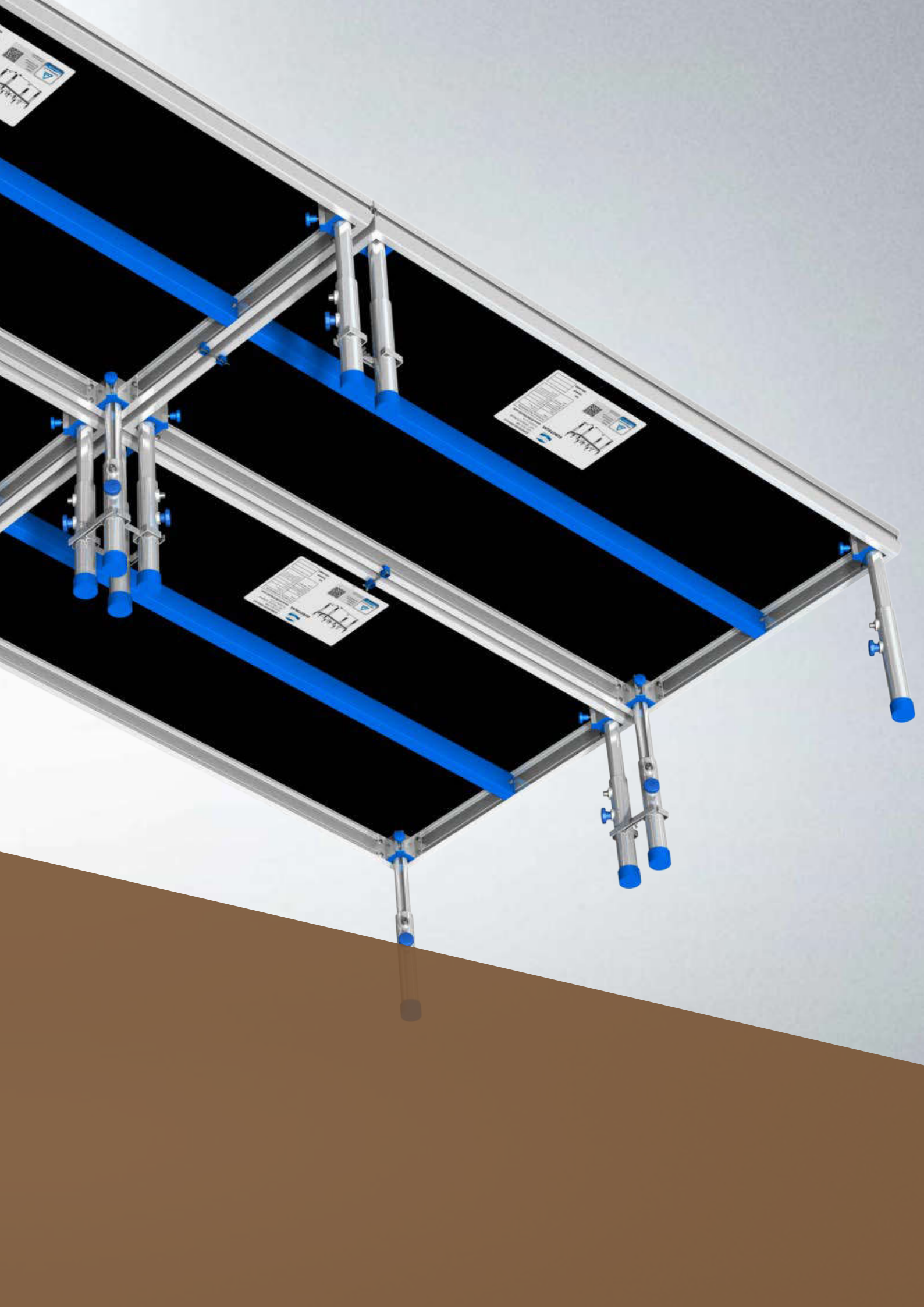
Luptaetaqui qui ra doluptat quia nos eatur simil illuptaqui repudantios dolorent que nonseque volum ipient. Aximint velenim qui asse inum et liquat.

Platform Limiter

Productcode
ED-ACC-PLIM



Legs & Legs Accessories



Legs & Legs Accessories

Standard Round Legs

These fixed legs come in various heights. The ordered leg height determines the height of the platform.



Round Legs Metric

Productcode	Height
ED-SLR-02	20 cm.
ED-SLR-03	30 cm.
ED-SLR-04	40 cm.
ED-SLR-05	50 cm.
ED-SLR-06	60 cm.
ED-SLR-07	70 cm.
ED-SLR-08	80 cm.
ED-SLR-09	90 cm.
ED-SLR-10	100 cm.
ED-SLR-11	110 cm.
ED-SLR-12	120 cm.

Round Legs Imperial

Productcode	Height
ED-SLR-08I	8 inch.
ED-SLR-12I	12 inch.
ED-SLR-16I	16 inch.
ED-SLR-20I	20 inch.
ED-SLR-24I	24 inch.
ED-SLR-28I	28 inch.
ED-SLR-32I	32 inch.
ED-SLR-36I	36 inch.
ED-SLR-40I	40 inch.
ED-SLR-44I	44 inch.
ED-SLR-48I	48 inch.

(Height = deck height)

Round Legs + Adjustable foot

These elements allow construction at different heights. Adjustable legs enable seamless height adjustment in small ranges.



Adjustable foot Metric

Productcode	Height
ED-SLR-ADJ-02	20 cm.
ED-SLR-ADJ-03	30 cm.
ED-SLR-ADJ-04	40 cm.
ED-SLR-ADJ-05	50 cm.
ED-SLR-ADJ-06	60 cm.
ED-SLR-ADJ-07	70 cm.
ED-SLR-ADJ-08	80 cm.
ED-SLR-ADJ-09	90 cm.
ED-SLR-ADJ-10	100 cm.
ED-SLR-ADJ-11	110 cm.
ED-SLR-ADJ-12	120 cm.

Adjustable foot Imperial

Productcode	Height
ED-SLR-ADJ-08I	8 inch.
ED-SLR-ADJ-12I	12 inch.
ED-SLR-ADJ-16I	16 inch.
ED-SLR-ADJ-20I	20 inch.
ED-SLR-ADJ-24I	24 inch.
ED-SLR-ADJ-28I	28 inch.
ED-SLR-ADJ-32I	32 inch.
ED-SLR-ADJ-36I	36 inch.
ED-SLR-ADJ-40I	40 inch.
ED-SLR-ADJ-44I	44 inch.
ED-SLR-ADJ-48I	48 inch.

(Height = deck height)

Telescopic Legs

Telescopic legs ensures a fluent regulation of the platform height in the defined range.



Telescopic Legs Metric

Productcode	Height Metric
ED-TLR-45-60	45 ~ 60 cm.
ED-TLR-60-90	60 ~ 90 cm.
ED-TLR-90-140	90 ~ 140 cm.
ED-TLR-100-160	100 ~ 160 cm.
ED-TLR-120-190	120 ~ 190 cm.
ED-TLR-150-220	150 ~ 220 cm.

Telescopic Legs Imperial

Productcode	Height Imperial
ED-TLR-17-23	17.7 ~ 23.6 in.
ED-TLR-26-35	23.6 ~ 35.4 in.
ED-TLR-35-55	35.4 ~ 55.1 in.
ED-TLR-39-63	39.4 ~ 63.0 in.
ED-TLR-47-75	47.2 ~ 74.8 in.
ED-TLR-59-86	59.0 ~ 86.6 in.

Legs & Legs Accessories

Round Legs with Castor

Round legs with Castors are special designed to use the Eurotruss Stage Deck for example as a drum riser or movable platform.

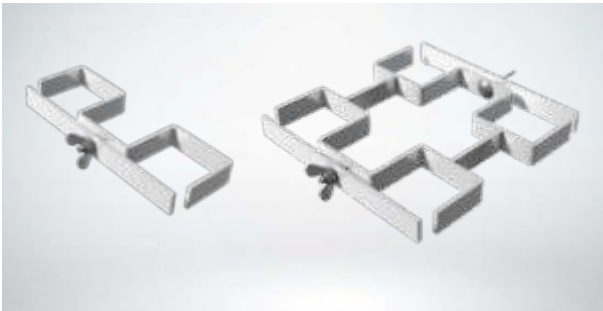


Roung Leg with Castor (Height = deck height)

Productcode	Height Metric
<i>ED-SLC-03</i>	30 cm.
<i>ED-SLC-04</i>	40 cm.
<i>ED-SLC-03B</i>	30 cm. + brake
<i>ED-SLC-04B</i>	40 cm. + brake
Productcode	Height Imperial
<i>ED-SLC-12I</i>	12 inch.
<i>ED-SLC-16I</i>	16 inch.
<i>ED-SLC-12IB</i>	12 inch. + brake
<i>ED-SLC-16IB</i>	16 inch. + brake
<i>ED-SLC-24IB</i>	24 inch. + brake

Leg to Leg clamps

Leg clamps are available in two versions; Leg to leg clamps to clamp two or four legs together and in case you build an overlap situation than a special clamp for a two-leg connection is available too.



Leg to leg clamps

Productcode	Type
<i>ED-ACC-ITLR-S</i>	Clamp for 2 legs
<i>ED-ACC-ITLR-S1</i>	Clamps for 2 legs with overlap
<i>ED-ACC-ITLR-D</i>	Double clamp for four legs

Spindle Solution Leg (in/outdoor)

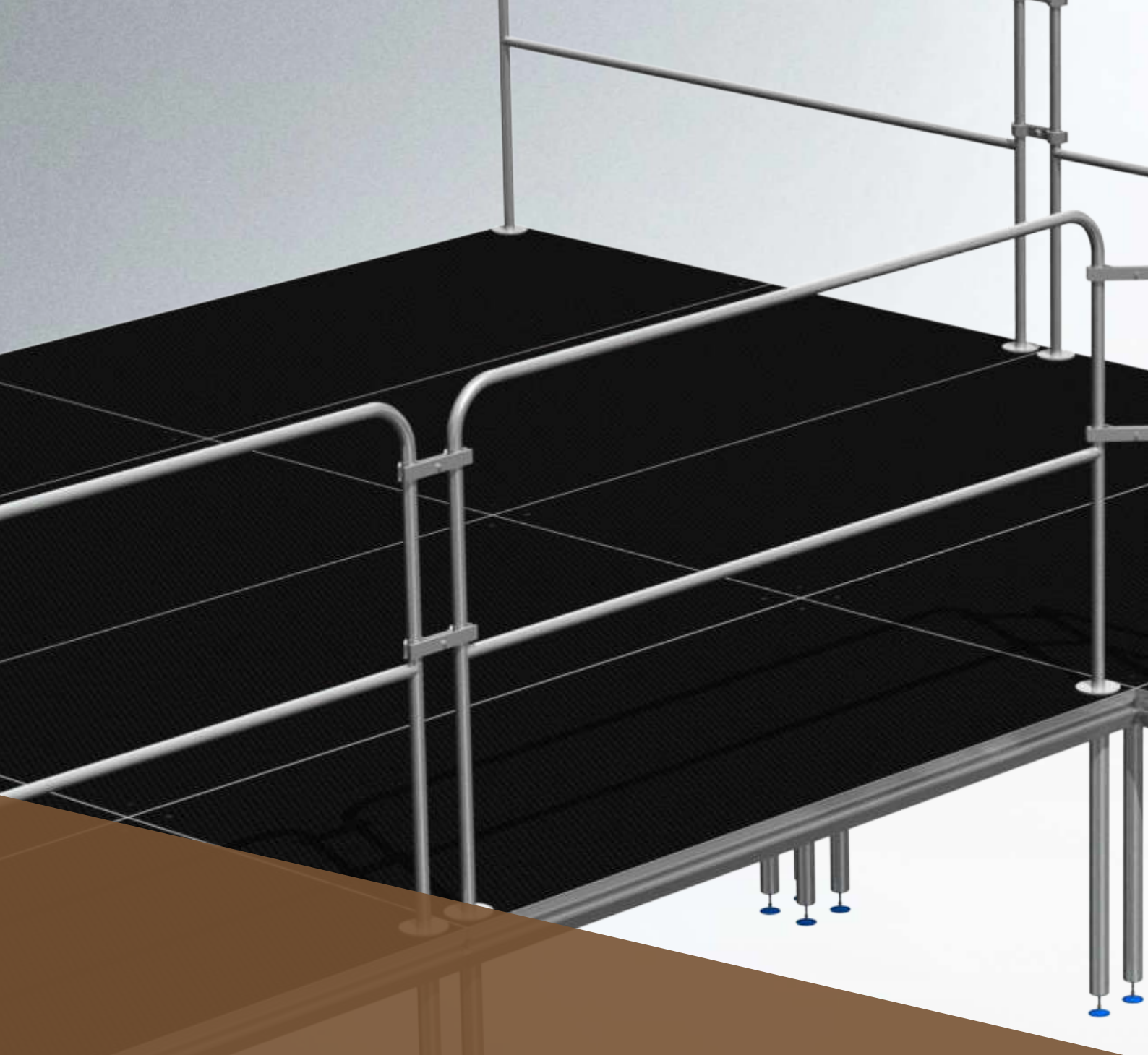
These special supports which you can combine with standard round legs create a solution to level a deck system for use on uneven (outdoor) terrain.



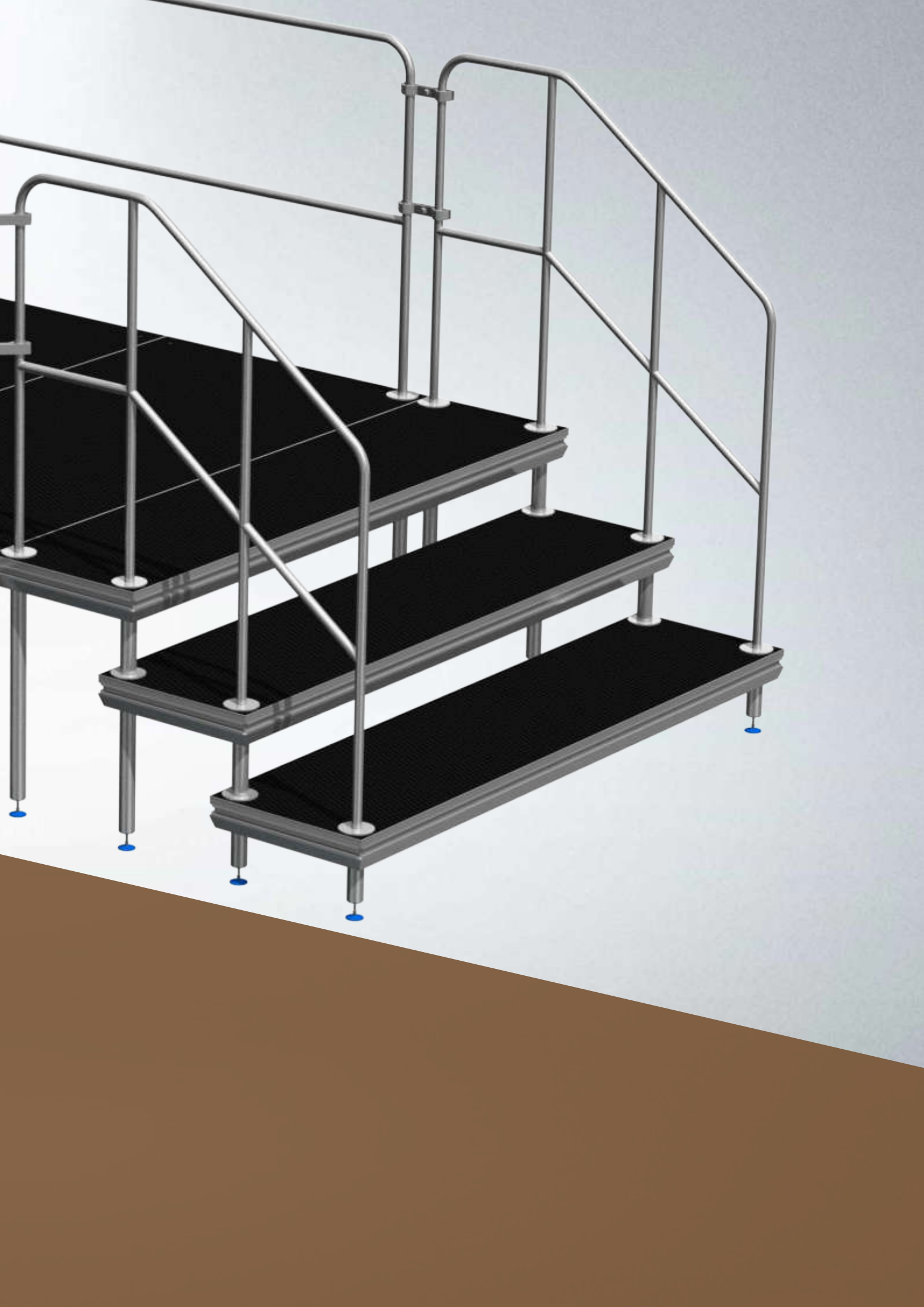
Spindle Solution Leg (in/outdoor)

Productcode	Type
<i>ED-SLR-VS2</i>	For 2 legs.
<i>ED-SLR-VS4</i>	For 4 legs.

The supports are including a variable foot plate



Handrailing



Handrailing outside the stage



Handrails outside the stage

Available on our decking system are the handrails that are mounted on the outside of the stage, with included connectors (knobs) to connect the handrails to the profile that is made in the side of the deck system. This profile is also used for the self-leveling inserts, assembly inserts and other accessories like the kick toe boards and skirting profiles.

We offer three types of hand rails to mount on the side of the stage: standard aluminum handrails and the same hand rail but with a poly carbonate transparent screen and heavy duty handrails (also known as child safe) which offers more stability and more strength at side impact.

Note: A combination of outside handrails, kick toe boards and or skirting profiles is not possible, as these accessories all need a clear groove in the profile. If you would like to use both kick toe boards or skirting profiles together with hand rails we would like to refer you to the up following pages about hand rails that can be mounted on top of the stage (inside rails)

Handrailing outside the stage

Standard Handrailing (mount on outside deck)

We offer aluminum handrails that can be used with all standard sizes of decks in metric 200cm and 100cm as well as in imperial 8ft and 4ft. The handrails are very durable and at the same time very light. The additional bar is a protection against sliding for example flight cases. All handrails are powder coated black.



Standard Handrailing

Productcode	Length	Height
ED-SHRO-L200	200 cm.	120 cm.
ED-SHRO-L100	100 cm.	120 cm.
ED-SHRO-L8FT	8 ft.	4 ft.
ED-SHRO-L4FT	4 ft.	4 ft.

**All handrailings are delivered with connectors for deck connection*



Standard Handrailing with Plexiglas

Productcode	Length	Height
ED-SHRO-L200-TR	200 cm.	120 cm.
ED-SHRO-L100-TR	100 cm.	120 cm.
D-SHRO-L8FT-TR	8 ft.	4 ft.
ED-SHRO-L4FT-TR	4 ft.	4 ft.

**All handrailings are delivered with connectors for deck connection*

Heavy Duty Handrailing (mount on outside deck)

Next, to the standard handrails we offer a Heavy Duty handrail, this handrail is child safe and offers more stability and more strength than the standard handrail. All handrails are powder coated black.



Heavy Duty Handrailing

Productcode	Length	Height
ED-SHRO-L200-HD	200 cm.	120 cm.
ED-SHRO-L100-HD	100 cm.	120 cm.
ED-SHRO-L8FT-HD	8 ft.	4 ft.
ED-SHRO-L4FT-HD	4 ft.	4 ft.

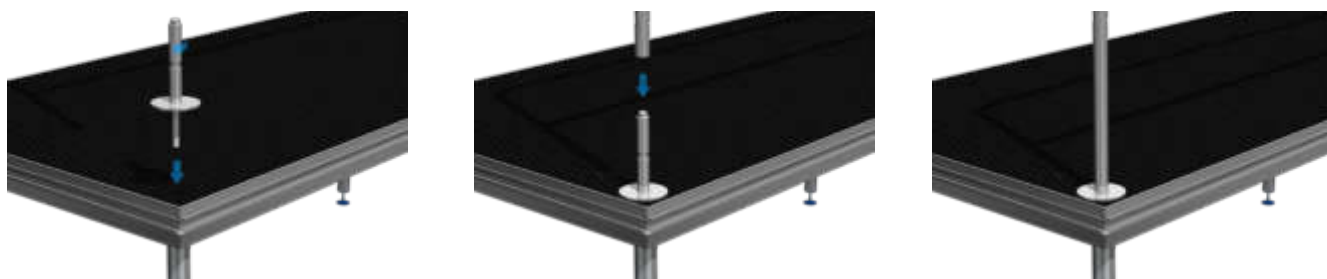
**All handrailings are delivered with connectors for deck connection*

Handrailing inside the stage



Inside Handrails mounted on the stage

New is the feature that the standard handrails can be mounted inside (on top of the stage). It gives it a very professional look and feel when it comes to building stages and as the profile on the side on the deck is not used for this type of handrails, it gives you the possibility to mount other accessories on the side of the deck such as kick toe boards or skirting profiles.



To mount the handrails on top of the stage a special adaptor is needed. This adaptor is mounted through the deck in the corner side where the little dot (cap) can be removed. As the dot is removed the adaptor fits in a special leg which offers the needed support for the adaptor to hold the handrails. The handrail just can be put on the pivot holder.

Handrailing inside the stage

Standard Handrailing (mount in the deck)

We offer aluminum handrails that can be used with all standard sizes of decks in metric 200cm and 100cm as well as in imperial 8ft and 4ft. The handrails are very durable and at the same time very light. The additional bar is a protection against sliding for example flight cases. All handrails are powder coated black.



Standard Handrailing

Productcode	Length	Height
ED-SHRI-200	200 cm.	120 cm.
ED-SHRI-100	100 cm.	120 cm.
ED-SHRI-8FT	8 ft.	4 ft.
ED-SHRI-4FT	4 ft.	4 ft.

**All handrailings are delivered with connectors for deck connection*



Standard Handrailing with Plexiglas

Productcode	Length	Height
ED-SHRI-200-TR	200 cm.	120 cm.
ED-SHRI-100-TR	100 cm.	120 cm.
ED-SHRI-8FT-TR	8 ft.	4 ft.
ED-SHRI-4FT-TR	4 ft.	4 ft.

**All handrailings are delivered with connectors for deck connection*

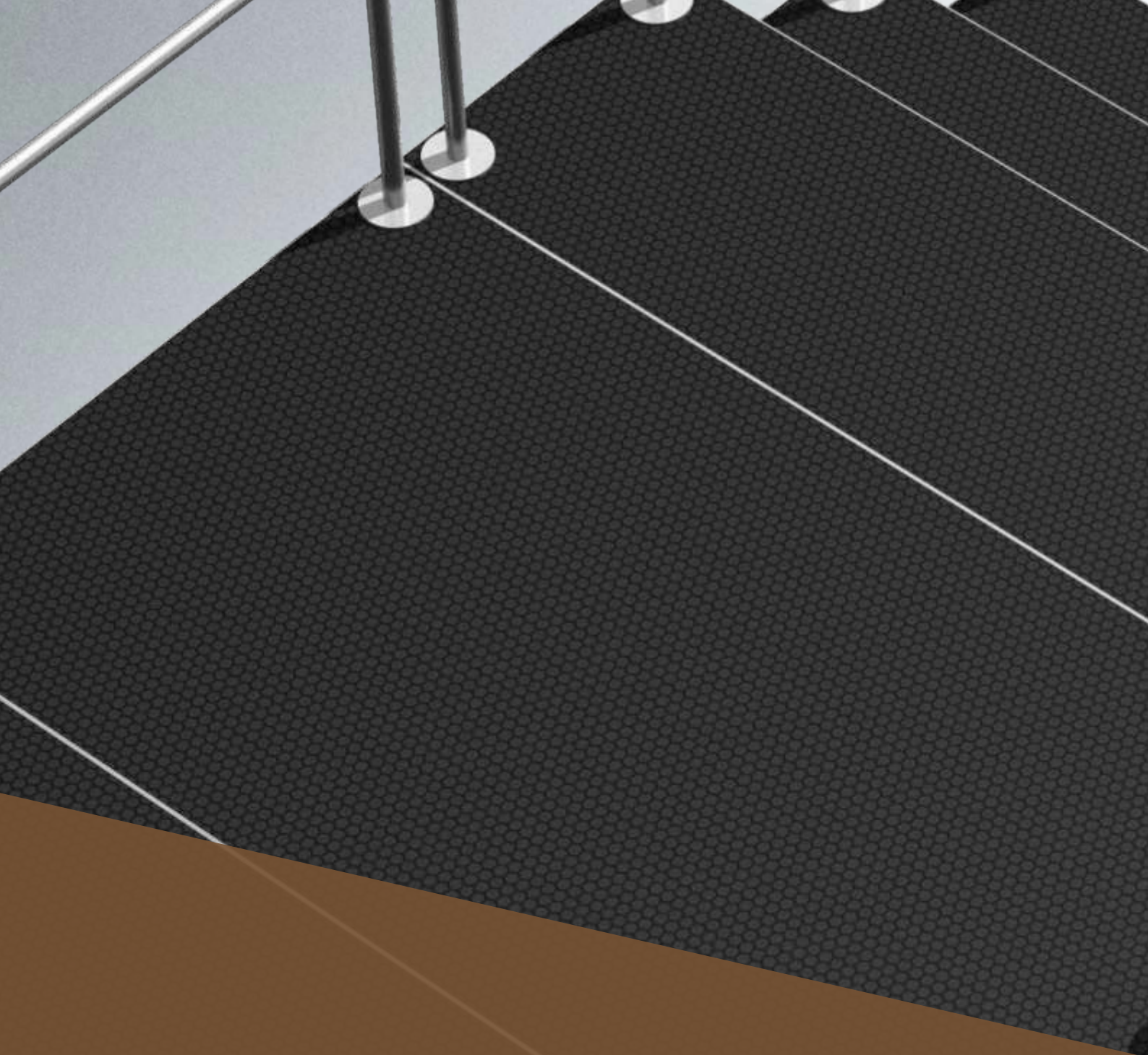
Adaptor for linking handrailing inside the stage

To mount the handrails on top of the deck system a special adaptor is needed. This adapter fits on top of the deck after removing the little dot (cap). The handrail should be put on the pivot holder.

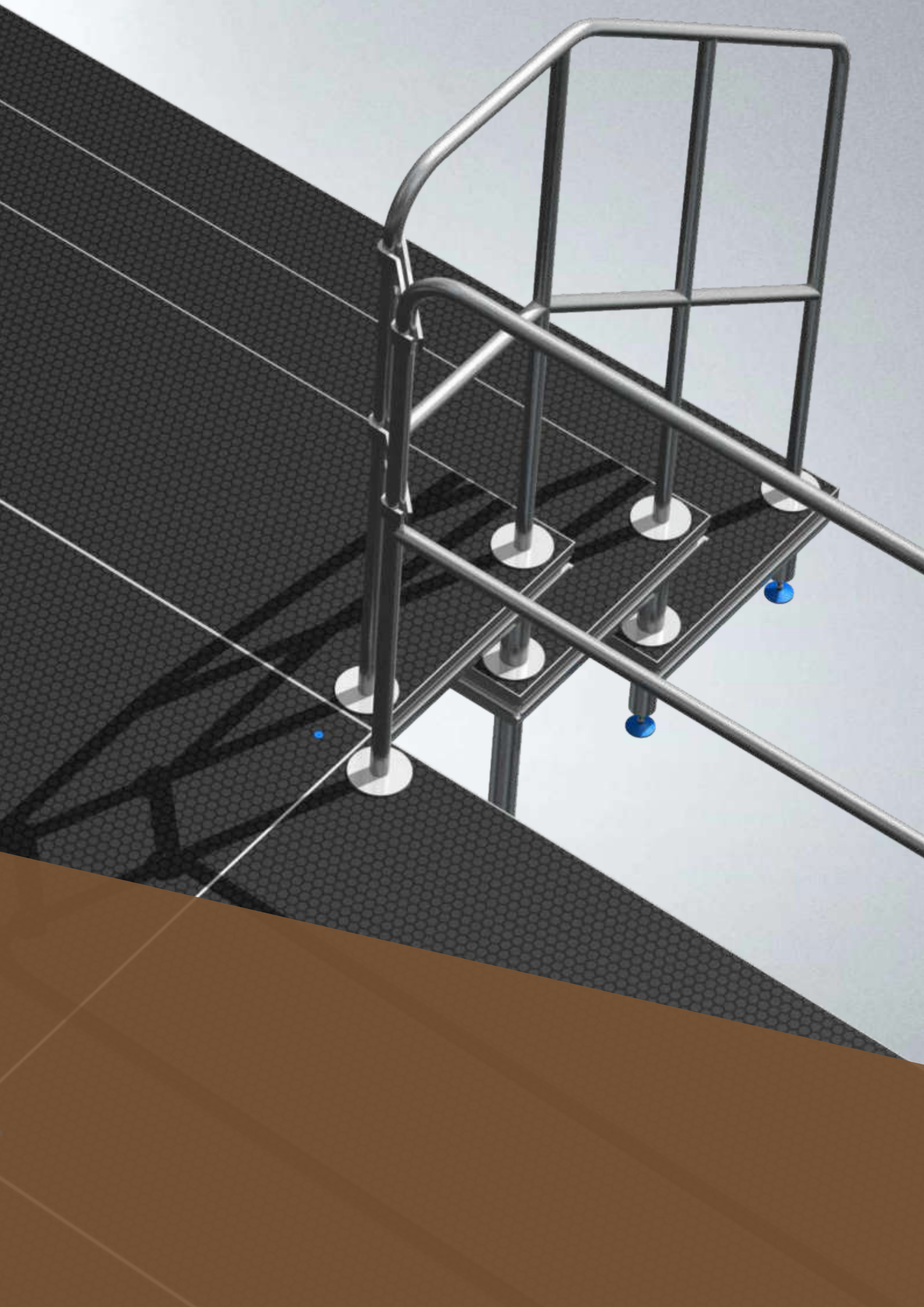


Adaptor for linking handrailing inside the stage

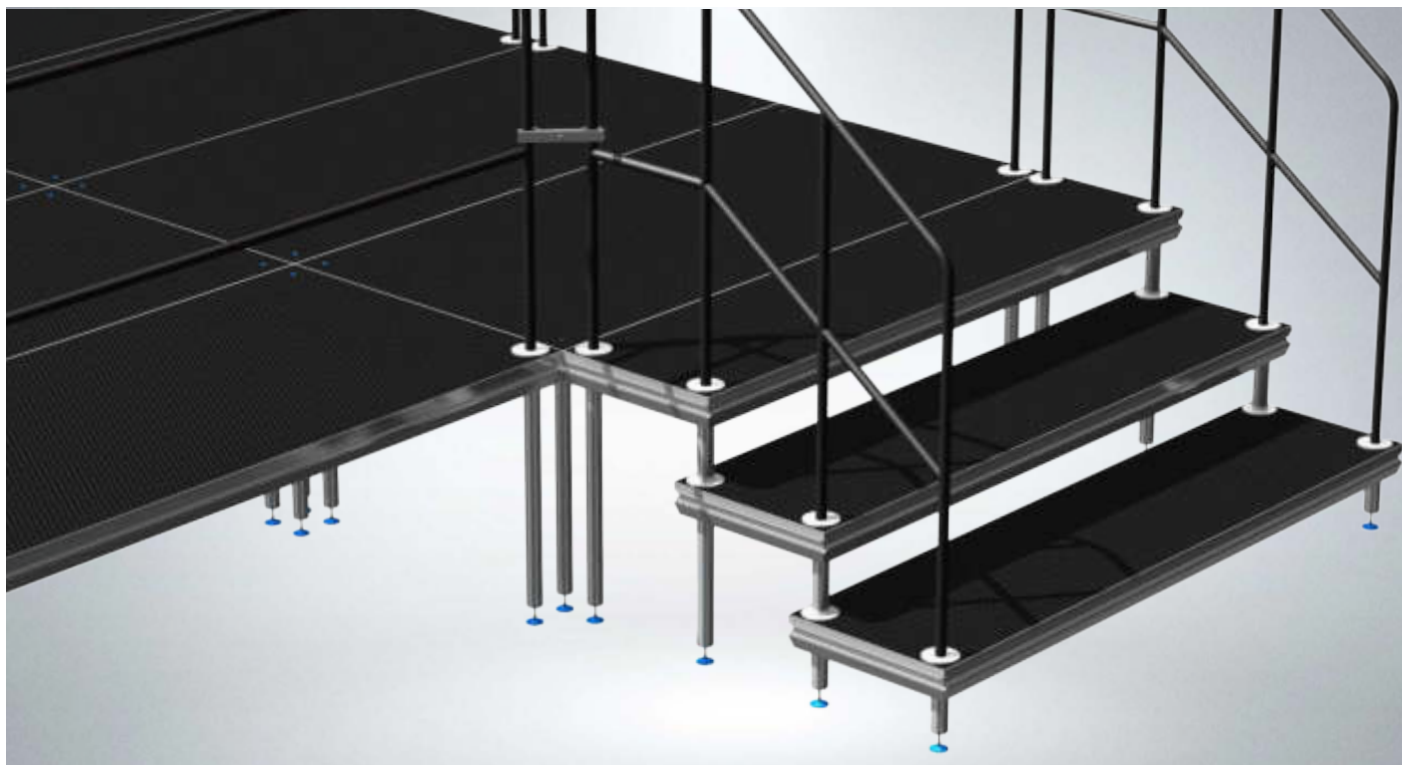
Productcode	For use with
ED-SHRI-ADAPTOR	Adaptor for mounting on deck



Stairs



Stage decks stairs



Add on Stairs to your Stage Deck Floor

We offer two ways to build stairs to your stage platform. Here you see the step-on and build-on solution which requires step decks of 30cm (12") deep. By using the special spacer and removing the dots (caps) from the deck, a pivot connector can be inserted to mount the stair legs. On the next page you can find the required parts to build an add-on stairway.

The solution to use the mount on stairways is also possible. Eurotruss offers both solutions!

Stage decks stairs

Step stairs Metric

Special sized steps are available to make stairs from stage decks, to build this Metric sized system you need the special deck, the adaptor and special legs that fixates the stair adaptor.

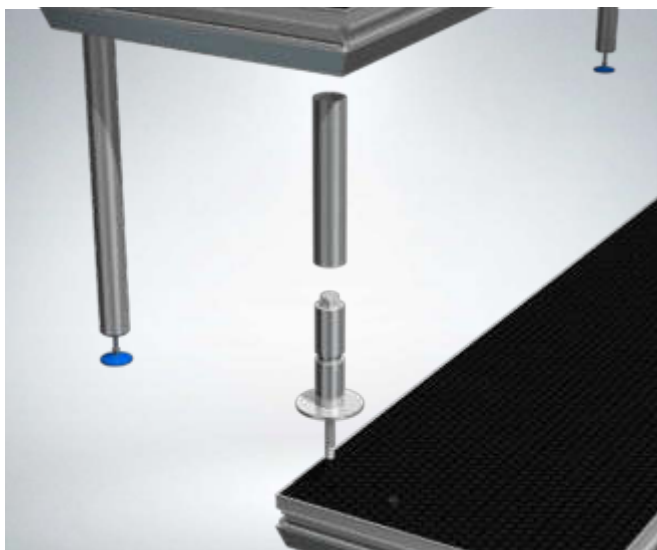


Step stairs Metric

Productcode	Product
<i>EDSF-1x03</i>	Stage deck step 100 x 30cm
<i>EDSF-ADAPTOR</i>	Stairs Adaptor
<i>EDSF-HR</i>	Modular stair handrail
<i>ED-SHRI-ADAPTOR</i>	Adapter for mounting on deck

Step stairs Imperial

Special sized steps are available to make stairs from stage decks, to build this Imperial sized system you need the special deck, the adaptor and special legs that fixates the stair adaptor.



Step stairs Imperial

Productcode	Product
<i>EDSF-1,2x03</i>	Stage deck step 4 x 1 ft.
<i>EDSF-ADAPTOR</i>	Stairs Adaptor
<i>EDSF-HR</i>	Modular stair handrail
<i>ED-SHRI-ADAPTOR</i>	Adapter for mounting on deck

Fixed Stairs



* Stairs are standard delivered without the safety railing

Modular stairs with all steps of the same height; available in four different heights. The stairs have adjustable feet which make it possible to place and level the stairs on uneven surfaces. The material of the construction is welded from steel profiles, the steps are made of 15mm plywood.

Handrailing for Fixed Stairs

A specially angled handrail is available for fixed stairs, there are no extra connectors needed, as they are included with the handrail. Mounting the hand railing to the fixed stairs is very easy and fast bolting the handrail to the stairway. All is predrilled and the bolts and wing nuts are included.



Handrails For Fixed Stairways

Productcode	For use with
ED-SHRO-ST5	Modular Stairs (no connectors needed)

Fixed Stairs



Fixed stair 1st step

Fixed Stair 8 in. / 20cm

Productcode	Height
<i>ESD-ST5-02</i>	20 cm.
<i>EDS-ST5-08I</i>	8 in.



Fixed stair 2nd step

Fixed Stair 16 in. / 40cm

Productcode	Height
<i>ESD-ST5-04</i>	40 cm.
<i>EDS-ST5-16I</i>	16 in.



Fixed stair 3rd step

Fixed Stair 24 in. / 60cm

Productcode	Height
<i>ESD-ST5-06</i>	60 cm.
<i>EDS-ST5-24I</i>	24 in.



Fixed stair 4th step

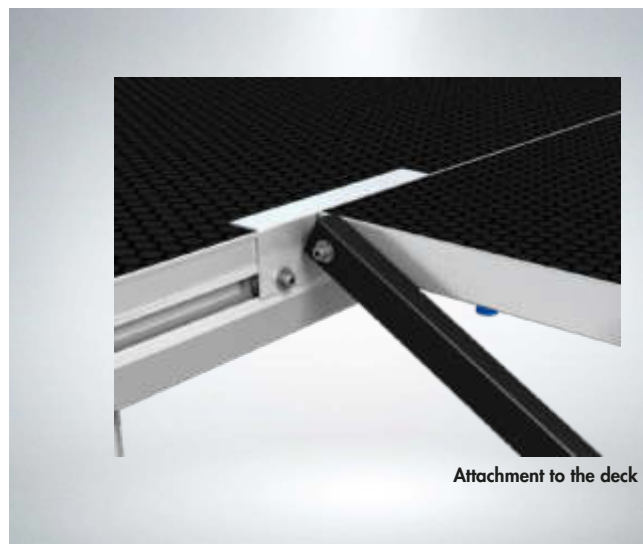
Fixed Stair 32 in. / 80cm

Productcode	Height
<i>ESD-ST5-08</i>	80 cm.
<i>EDS-ST5-32I</i>	32 in.

Adjustable Stairs



* Stairs are standard delivered without the safety railing



Adjustable stairs ensure quick and smooth assembly. They are made of heavy-duty steel sections and the stairssteps are filled with anti-slip plywood. The staircase is self angled because of the movable steps mounted in the frame.

Adjustable Stairs

Adjustable Stairs Metric

Imperial Adjustable Stairs are flexible stairs that can be used on a range of predetermined heights. The stairs can be mounted super easy and fast using an Allen key in the groove of the profile of the deck.



Adjustable Stairs Metric

Productcode	Height	Folded Length
<i>EDS-ADJST-04</i>	40 ~ 60 cm.	91 cm
<i>EDS-ADJST-06</i>	60 ~ 100 cm.	155 cm
<i>EDS-ADJST-08</i>	80 ~ 140 cm.	187 cm
<i>EDS-ADJST-10</i>	100 ~ 180 cm.	251 cm

Adjustable Stairs Imperial

Imperial Adjustable Stairs are flexible stairs that can be used on a range of predetermined heights. The stairs can be mounted super easy and fast using an Allen key in the groove of the profile of the deck.



Stairs Adjustable Imperial

Productcode	Height	Folded Length
<i>EDS-ADJST-16I</i>	16 ~ 24 inches	36 inch.
<i>EDS-ADJST-24I</i>	24 ~ 40 inches	61 inch.
<i>EDS-ADJST-32I</i>	32 ~ 48 inches	74 inch.
<i>EDS-ADJST-40I</i>	40 ~ 72 inches	99 inch.

Handrailing for Adjustable Stairs

For adjustable stairs a special handrailing is available, there is a Left and a Right version as the handrailings have special connectors already mounted on the product.



Handrailing For Adjustable Stairways

Productcode	For use with
<i>EDS-ADJST-HRR</i>	Adjustable Stairs Right Side
<i>EDS-ADJST-HRL</i>	Adjustable Stairs Left Side

Deck & Hand railing Accessories

Deck to Deck clamp



The Deck to Deck clamp is used to connect the deck profile to each other. The deck to deck clamps ensure a safe and stable stage construction.

Deck to Deck clamp

Productcode	Material
ED-ACC-DD	Galvanized steel & Hard Plastic

Deck to Deck clamping clamp



The Deck to Deck clamping clamp can be used to connect the deck profiles to each other in very low stage constructions. These clamps are inserted into the profile and pull them together. Fasten with an Allen Key.

Deck to Deck clamping clamp

Productcode	Material
ED-ACC-CC	Galvanized steel

Self leveling insert



To level the Decks on an even line you can use the self leveling insert which levels the decks on one line. Three self leveling inserts per deck are used for the best result.

Self leveling insert

Productcode	Material
ED-ACC-DL	Aluminium

Assembly insert



When you want to attach decor or other objects to the stage decks you can use the assembly insert, slide this insert in the profile and connect your object or decor to the stage deck with a M8 bolt.

Assembly insert

Productcode	Material
ED-ACC-SCD04	Galvanized steel

Handrailing link



The hand railing link connects the hand railing / barriers together to create a solid railing.

Handrailing link

Productcode	Material
ED-SHRO-LINK	Handrailing connector outside deck
ED-SHRO-LINK-C	Handrailing connector corner outside deck
ED-SHRI-LINK	Handrailing connector inside deck
ED-SHRI-LINK-C	Handrailing connector corner inside deck

Special solutions

Universal kick toe board / skirt profile

The universal kick board can be used as a Skirting Profile or turn around to use it as a kick board profile. We also supply standard Skirting Profiles as a click-on version or adaptable with the slide in adapters.



Kick toe board

Productcode	Length	Comment
<i>ED-KTB-L970</i>	100 cm.	To use as Skirt or Kickboard
<i>ED-KTB-L1970</i>	200 cm.	To use as Skirt or Kickboard
<i>ED-KTB-L101</i>	104 cm.	To use as Skirt or Kickboard
<i>ED-KTB-L204</i>	207 cm.	To use as Skirt or Kickboard
<i>ED-KTB-L4FT</i>	4 ft.	To use as Skirt or Kickboard
<i>ED-KTB-L8FT</i>	8 ft.	To use as Skirt or Kickboard

Skirt profile (click version)

To quickly mount skirting to the deck system you can use the special skirting profile. This skirting profile is equipped with a velcro strip which enables you to easily stick Molton or other fabrics to the deck.



Skirt Profile (click version)

Productcode	Length	Comment
<i>ED-SKIRT-L101</i>	104 cm.	Including Velcro Strip
<i>ED-SKIRT-L204</i>	207 cm.	Including Velcro Strip
<i>ED-SKIRT-L2FT</i>	2 ft.	Including Velcro Strip
<i>ED-SKIRT-L4FT</i>	4 ft.	Including Velcro Strip
<i>ED-SKIRT-L8FT</i>	8 ft.	Including Velcro Strip

Deck on Truss Adapter

With our special Deck to Truss adapter you are able to mount and safely secure the decks on top of a Truss structure.



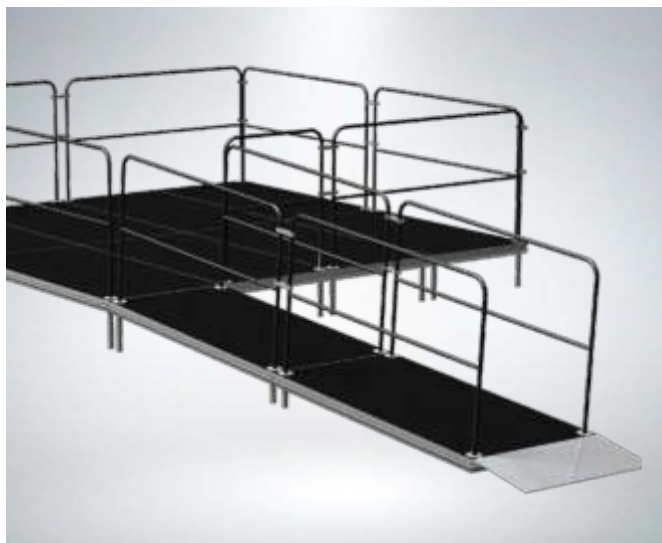
Deck on Truss Adapter

Productcode	Description
<i>ED-ACC-TDC</i>	Truss on deck clamp

Ramp & Dolly's

Ramp

By connecting several decks and adding some additional items you can turn our deckg system also in very durable and stable driveway. Ask our sales team for the possibilities.



Ramp

Productcode	Height Metric	Height Imperial
<i>ED-RMP-20</i>	20 cm.	8 in.
<i>ED-RMP-40</i>	40 cm.	16 in.
<i>ED-RMP-60</i>	60 cm.	24 in.
<i>ED-RMP-80</i>	80 cm.	32 in.
<i>ED-RMP-100</i>	100 cm.	40 in.
<i>ED-RMP-120</i>	120 cm.	48 in.

Dolly's

By connecting several decks and adding some additional items you can turn our deckg system also in very durable and stable driveway. Ask our sales team for the possibilities.



Dolly's

Productcode	Product
<i>ED-TROL-001</i>	Trolley for Decks Standard Flat (max 15pcs.)
<i>ED-TROL-002</i>	Trolley for Decks Upright (max 6 pcs.)
<i>ED-TROL-HR</i>	Trolley for handrailing (max 24pcs. 200 cm / 48 pcs 100 cm)

Allgemeine Geschäftsbedingungen von Flashlight Event- und Mediatechnik AG

1. Vertragsgegenstand

Die allgemeinen Geschäftsbedingungen gelten für den gesamten Geschäftsverkehr mit dem Kunden. Abweichende Abmachungen sind nur gültig, wenn sie durch Flashlight schriftlich bestätigt worden sind.

2. Gebrauch des Mietmaterials

Der Kunde bestätigt durch seine Unterschrift des Mietvertrags/Lieferscheins, dass er das gesamte Mietmaterial selbst geprüft hat, oder anerkennt andernfalls die Funktionsprüfung eines Flashlight-Mitarbeitenden. Nachträglich erklärte Mängel werden nicht anerkannt.

Der Kunde hat alle gemieteten Geräte in sorgfältiger Art und Weise zu gebrauchen, alle Weisungen, die mit dem Besitz, dem Gebrauch und dem Erhalt der Mietsachen verbunden sind zu beachten und die Wartungs-, Pflege- und Gebrauchsempfehlungen von Flashlight zu befolgen. Jede Art von Änderungen am Material durch den Kunden sind untersagt. Für jede mehr als normale Abnutzung ist der Kunde schadenersatzpflichtig. Die entsprechenden Kosten zur Wiederherstellung des ursprünglichen Zustandes werden dem Kunden belastet.

3. Mietdauer

Die Mietdauer beträgt mindestens einen Tag.

4. Versand und Gefahrenübergabe

Der Versand des Mietmaterials erfolgt auf Kosten des Kunden und auf dem billigsten Versandweg, es sei denn, der Kunde hat ausdrücklich eine bestimmte Versandart vorgeschrieben. Die Kosten, einer auf Wunsch des Kunden abgeschlossenen Transportversicherung, gehen zu dessen Lasten.

Der Gefahrenübergang auf den Kunden tritt bei Abholung oder Lieferung (Lieferschein) des Mietmaterials ein und erlischt bei Rückgabe oder Abholung.

5. Eigentum

Sämtliches Material samt Zubehör und Kleinmaterial ist Eigentum von Flashlight. Als Verbrauchsmaterial gilt nur, was ausdrücklich als solches bezeichnet wird.

Der Kunde darf weder durch Verkauf, noch Abtretung, noch in anderer Weise über die im Eigentum von Flashlight stehenden Materialien verfügen. Sicherungsübereignung, Verpfändung oder sonstige Belastungen des Mietmaterials sind gegenüber Flashlight unwirksam. Die Kosten von Interventionsmassnahmen zum Schutze des Eigentums von Flashlight oder Schäden, die durch Ausfall der Geräte, aus welchen Gründen auch immer, entstehen, werden dem Kunden in Rechnung gestellt.

Die Firmenlogos und Schriftzüge an den Materialien dürfen durch den Kunden oder Dritte weder entfernt, abgedeckt noch überklebt werden.

6. Gewährleistung

Flashlight haftet für den funktionstüchtigen Zustand der vermieteten Materialien im Zeitpunkt des Gefahrenüberganges unter Ausschluss weiterer Ansprüche. Während der Mietdauer auftretende Defekte oder Pannen sind unvorhersehbar; daher wird vom Kunden ausdrücklich auf jede Schadenersatzforderung verzichtet.

7. Haftung

Der Kunde übernimmt die Haftung für das Material vom Zeitpunkt des Lagerausgangs bis zum Zeitpunkt des Lagereingangs in Regensdorf. Der Kunde haftet vollumfänglich für jegliche Schäden an und von den Mietobjekten, entstehend durch Transport, Witterung, Nichteinhalten der Netznormen, unsachgemässe Bedienung, Diebstahl, Verschmutzung usw.

Flashlight übernimmt keinerlei Haftung für irgendwelche Schäden, die im Zusammenhang mit den Materialien, Geräten und Apparaturen entstehen. Eine Geltendmachung weiterer Ansprüche, insbesondere auch von Folgeschäden, ist in jedem Fall ausgeschlossen.

8. Untervermietung und Abtretung

Dem Kunden ist es untersagt, das Vertragsverhältnis an Dritte abzutreten oder die Mietsachen unterzuvermieten.

9. Sicherheitsvorschrift

Der Kunde verpflichtet sich, alle gemieteten Geräte über einen Fehlerstromschutzschalter zu betreiben.

10. Lizenzen

Jede zu einem Mietgerät mitgelieferte Software darf nur zu dessen Betreibung benutzt werden. Jedes Kopieren oder Veräussern der Software ist untersagt. Bei Zuwiderhandlung des Kunden oder Dritten hält der Kunde Flashlight von allen Schadenersatzansprüchen der Lizenzinhaber frei, indem der Kunde den Anspruch selbst befriedigt oder auf eigene Kosten und Gefahr abwehrt.

11. Bewilligungen

Bewilligungen, Konzessionen, SUIISA-Gebühren und jede andere Art von Aufführungslizenzen besorgt der Kunde auf eigene Kosten und hat alle damit verbundenen Auflagen zu tragen. Wird die Mietsache wegen diesbezüglicher Verletzung des Kunden konfisziert oder mit Pfand belegt, ist der Kunde Flashlight dafür vollumfänglich schadenersatzpflichtig.

12. Versicherung

Das Versichern des gesamten Materials samt Zubehör gegen Feuer-, Wasser-, Vandalen- und Elementarschäden, Beschädigungen sowie Diebstahl ist Sache des Kunden.

13. Diebstahl / Transportschäden

Bei Diebstahl oder Abhandenkommen des Mietmaterials ist der Kunde verpflichtet, einen Polizeirapport erstellen zu lassen. Bei Feststellen von Transportschäden hat der Kunde beim Frachtführer eine Bestandesaufnahme zu veranlassen.

14. Reparatur und Unterhalt

Allfällige während der Mietzeit notwendigen Unterhalts- und Reparaturarbeiten an den Mietgegenständen darf der Kunde nur von Flashlight oder einer von Flashlight bezeichneten Drittperson durchführen lassen.

15. Zahlungshinweis

Der Mietpreis und die Konditionen bestimmen sich gemäss Offerte / Auftragsbestätigung und verstehen sich exkl. MwSt. Der Mindestmietbetrag beträgt Fr. 50.-. Die Rechnungsbeträge werden netto, soweit nichts anderes vereinbart, innert 20 Tagen ab Rechnungsstellung fällig.

Die Mieten für Abholanlagen sind grundsätzlich beim Abholen der Mietgegenstände zu bezahlen. Zusätzlich zur Mietgebühr ist ein Depot von mindestens Fr. 100.- zu hinterlegen (je nach Mietgegenstand kann dieses auch höher sein). Dieses Depot wird bei Rückgabe des Mietmaterials zurückbezahlt, unter Abzug allfälliger Defekte und einer Umtriebsentschädigung bei verspäteter Rückgabe. Die Haftung des Kunden ist nicht auf die Höhe des Depots beschränkt.

16. Miete inkl. Personal

Bei Mieten inkl. Personal und Transport ist grundsätzlich 50% des Pauschalbetrages 14 Tage vor der Veranstaltung fällig. Ist diese Vorauszahlung nicht geleistet worden, behält sich Flashlight das Recht vor, den Auftrag nicht auszuführen. Die restlichen 50% sind während der Veranstaltung bar (bis 24.00 Uhr) zahlbar.

17. Rücktritt / Annullierung

Annulliert der Kunde eine bereits bestätigte Miete / Auftrag, betragen die Annullationskosten:

bis 30 Tage vor Mietbeginn: 25% von der Gesamt-Auftragssumme
bis 10 Tage vor Mietbeginn: 50% von der Gesamt-Auftragssumme
bis 3 Tage vor Mietbeginn: 75% von der Gesamt-Auftragssumme
danach 100% von der Gesamt-Auftragssumme.

Bereits ausgeführte Vorbereitungsarbeiten wie auch speziell bestellte oder angefertigte Materialien, Geräte und Zubehör werden in jedem Fall voll verrechnet. Ebenso Materialausfälle, die durch die ursprüngliche Materialreservierungen entstanden sind.

18. Rückgabe des Mietmaterials

Die schriftlich vereinbarte Mietzeit ist einzuhalten. Retourniertes Material wird von Flashlight getestet. Flashlight behält sich das Recht vor, während 3 Tagen nach Retournerung des Mietmaterials, bei Defekt, auf den Kunden Regress zu nehmen. Die allfälligen Reparaturkosten werden in Rechnung gestellt.

Nicht retourniertes oder beschädigtes Mietmaterial wird zum Wiederbeschaffungspreis, resp. Wiederherstellungspreis dem Kunden in Rechnung gestellt.

19. Vorzeitige / Verspätete Rückgabe

Bei vorzeitiger Retournerung des Mietmaterials hat der Kunde keinen Anspruch auf Rückerstattung der Mietgebühren. Wird das Material zu spät retourniert, so läuft die Miete automatisch weiter und der Kunde ist verpflichtet, die Mehrkosten gemäss Mietpreisliste Flashlight zu bezahlen. Zudem behält sich Flashlight das Recht vor, das Mietmaterial ohne vorherige Ankündigung unter Verrechnung sämtlicher Spesen zurückzuholen.

20. Materialverkauf

Verkauft Flashlight dem Kunden Neu- oder Occasionsmaterial, bleibt dieses bis zu dessen vollständigen Bezahlung im Besitz von Flashlight. Der Kaufpreis ist per Abholung fällig. Übergabe erfolgt ab Lager Regensdorf.

21. Anwendbares Recht

Sämtliche Geschäftsbeziehungen unterstehen dem Schweizerischen Recht. Ausschliesslicher Gerichtsstand ist Dielsdorf / ZH.

FLASHLIGHT EVENT- UND MEDIATECHNIK AG

Pumpwerkstrasse 32
CH-8105 Regensdorf

Tel. +41 (0) 44 843 44 44
sales@flashlight.ch

www.eurotruss.ch

LICHT | AUDIO | VIDEO | MULTIMEDIA | LED | BÜHNEN